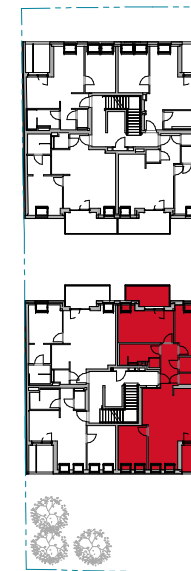
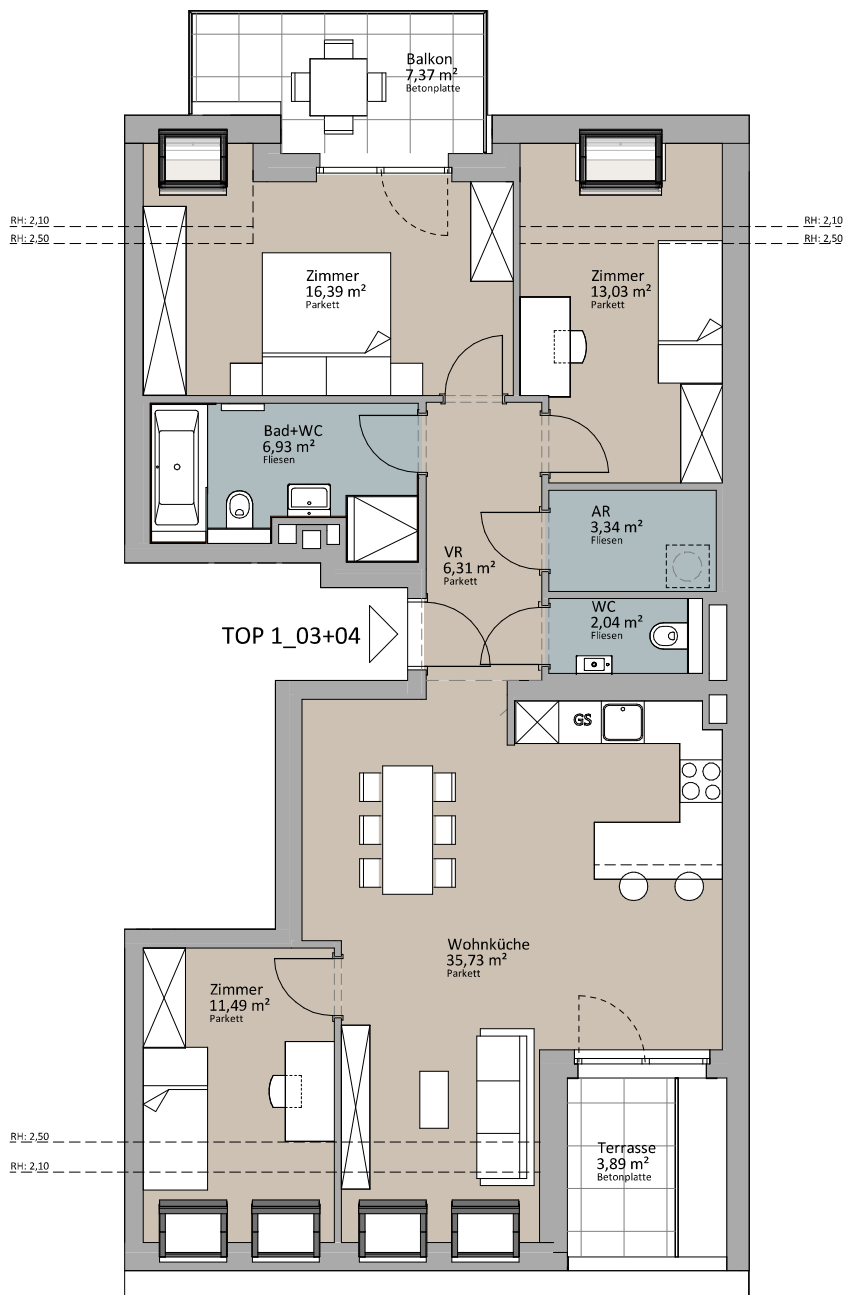


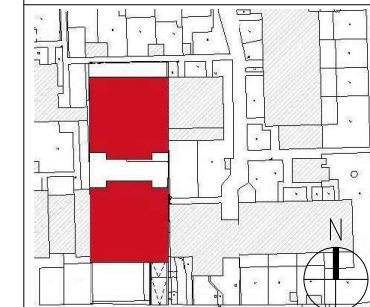


DG1 - Top 1_03+04

Wohnküche	35,73 m ²
Zimmer	11,49 m ²
AR	3,34 m ²
VR	6,31 m ²
Bad+WC	6,93 m ²
Zimmer	13,03 m ²
WC	2,04 m ²
Zimmer	16,39 m ²
	95,26 m ²
Terrasse	3,89 m ²
	3,89 m ²
Balkon	7,37 m ²
	7,37 m ²



LAGEPLAN



RUSTLER[®]
REAL ESTATE EXPERTS

PLANVERFASSER

Rustler Baumanagement GmbH

MAKLER

Rustler Immobilienreuehand GmbH
Mariahilfer Straße 196, 1150 Wien
Tel.: +43 (1) 894 97 46
E.: office@makler.rustler.eu

STAND: AUGUST 2021

BEARBEITER: MSÖ

