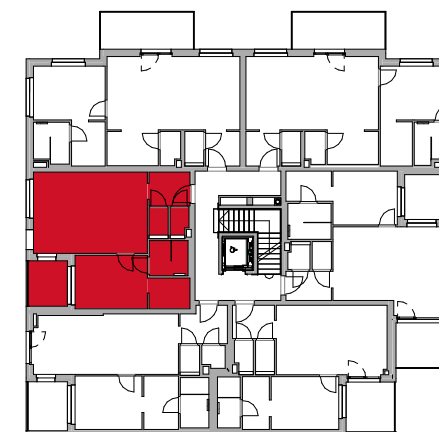


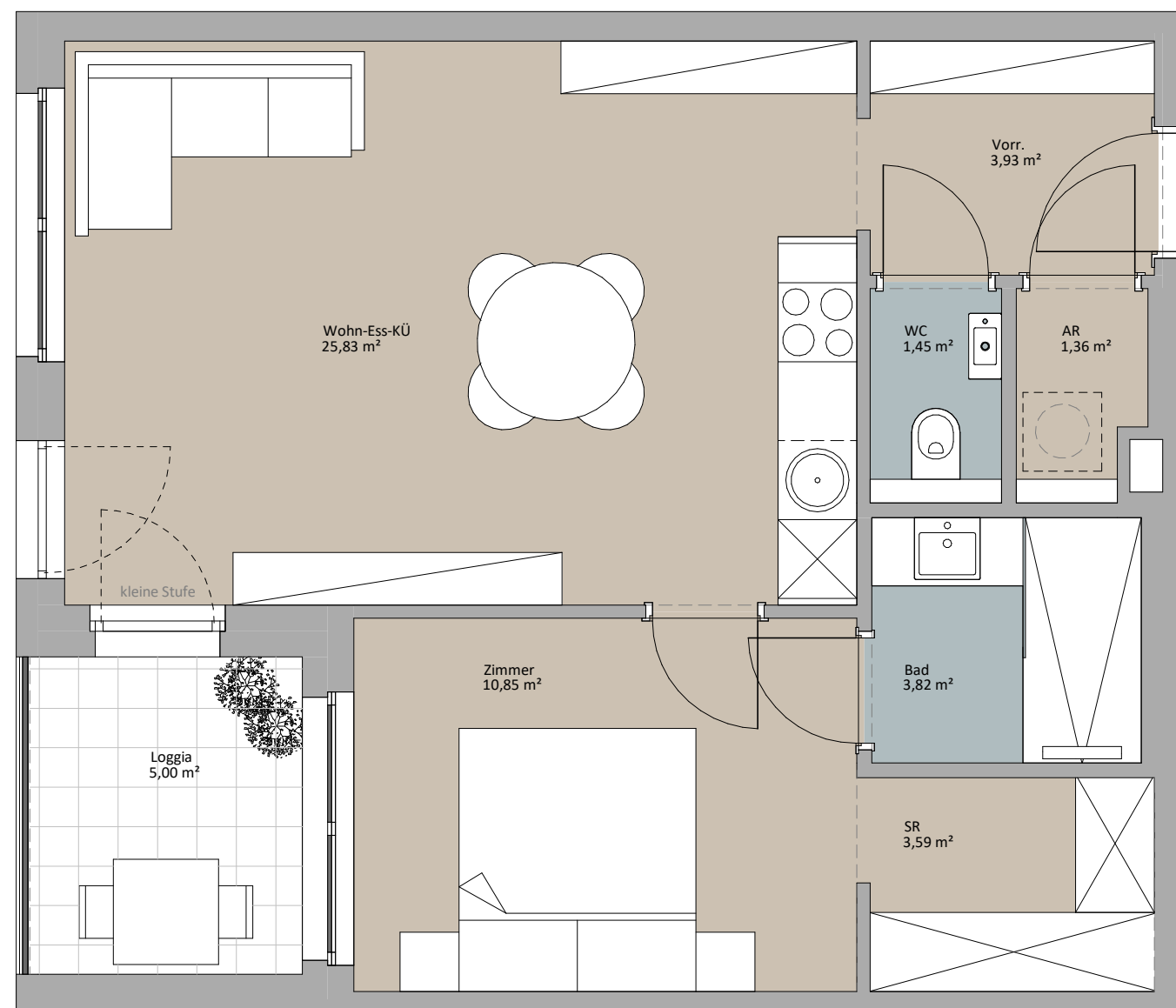


LAGEPLAN

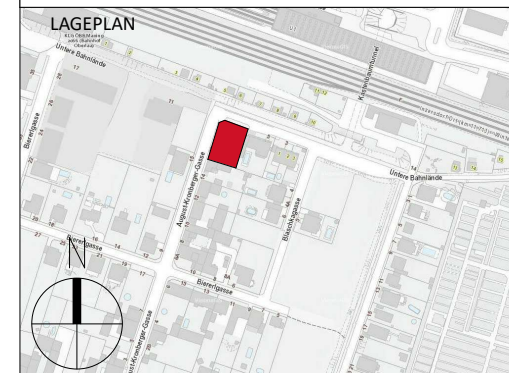


TOP 07

Zimmer	10,85 m ²
Wohn-Ess-KÜ	25,83 m ²
AR	1,36 m ²
WC	1,45 m ²
Vorr.	3,93 m ²
Bad	3,82 m ²
SR	3,59 m ²
	50,84 m ²
Loggia	5,00 m ²
	5,00 m ²



TOP 7



RUSTLER²
REAL ESTATE EXPERTS

PLANVERFASSER
Rustler Baumanagement GmbH

MAKLER
Rustler Immobilienreuehand GmbH
Mariahilfer Straße 196, 1150 Wien
Tel.: +43 (1) 894 97 46
E.: office@makler.rustler.eu

