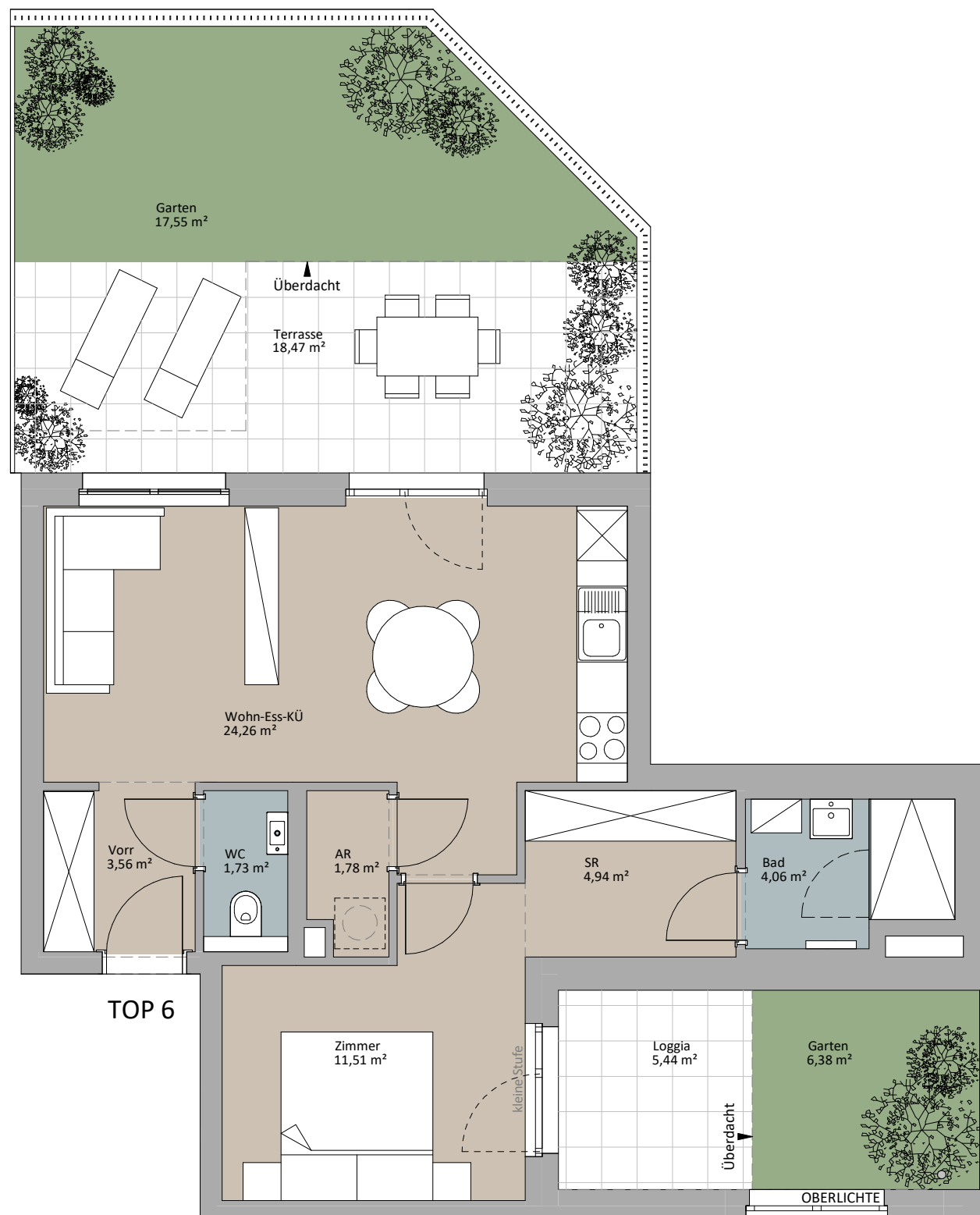
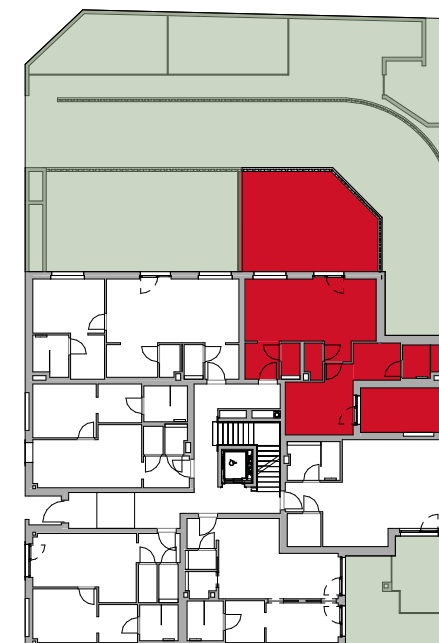


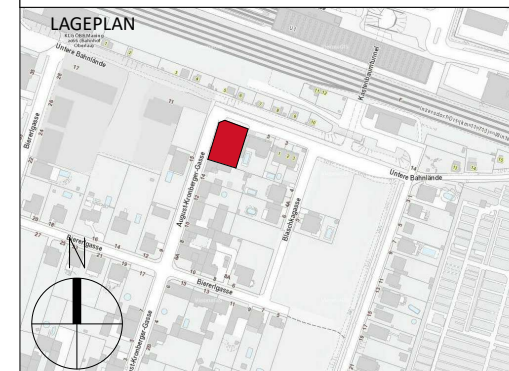


LAGEPLAN



TOP 06

AR	1,78 m <sup>2</sup>
Vorr	3,56 m <sup>2</sup>
WC	1,73 m <sup>2</sup>
Wohn-Ess-KÜ	24,26 m <sup>2</sup>
Bad	4,06 m <sup>2</sup>
Zimmer	11,51 m <sup>2</sup>
SR	4,94 m <sup>2</sup>
	51,84 m <sup>2</sup>
Terrasse	18,47 m <sup>2</sup>
Garten	17,55 m <sup>2</sup>
Loggia	5,44 m <sup>2</sup>
Garten	6,38 m <sup>2</sup>
	47,84 m <sup>2</sup>



**RUSTLER<sup>2</sup>**  
REAL ESTATE EXPERTS

PLANVERFASSER  
Rustler Baumanagement GmbH

MAKLER  
Rustler Immobilienreuehand GmbH  
Mariahilfer Straße 196, 1150 Wien  
Tel.: +43 (1) 894 97 46  
E.: office@makler.rustler.eu

STAND: JULI 2020

BEARBEITER: JAH

