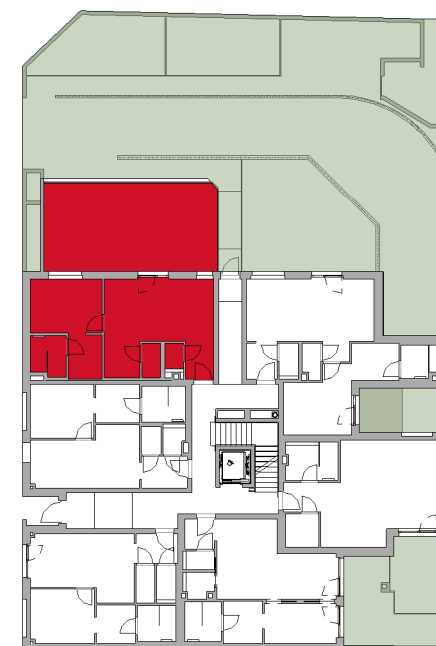


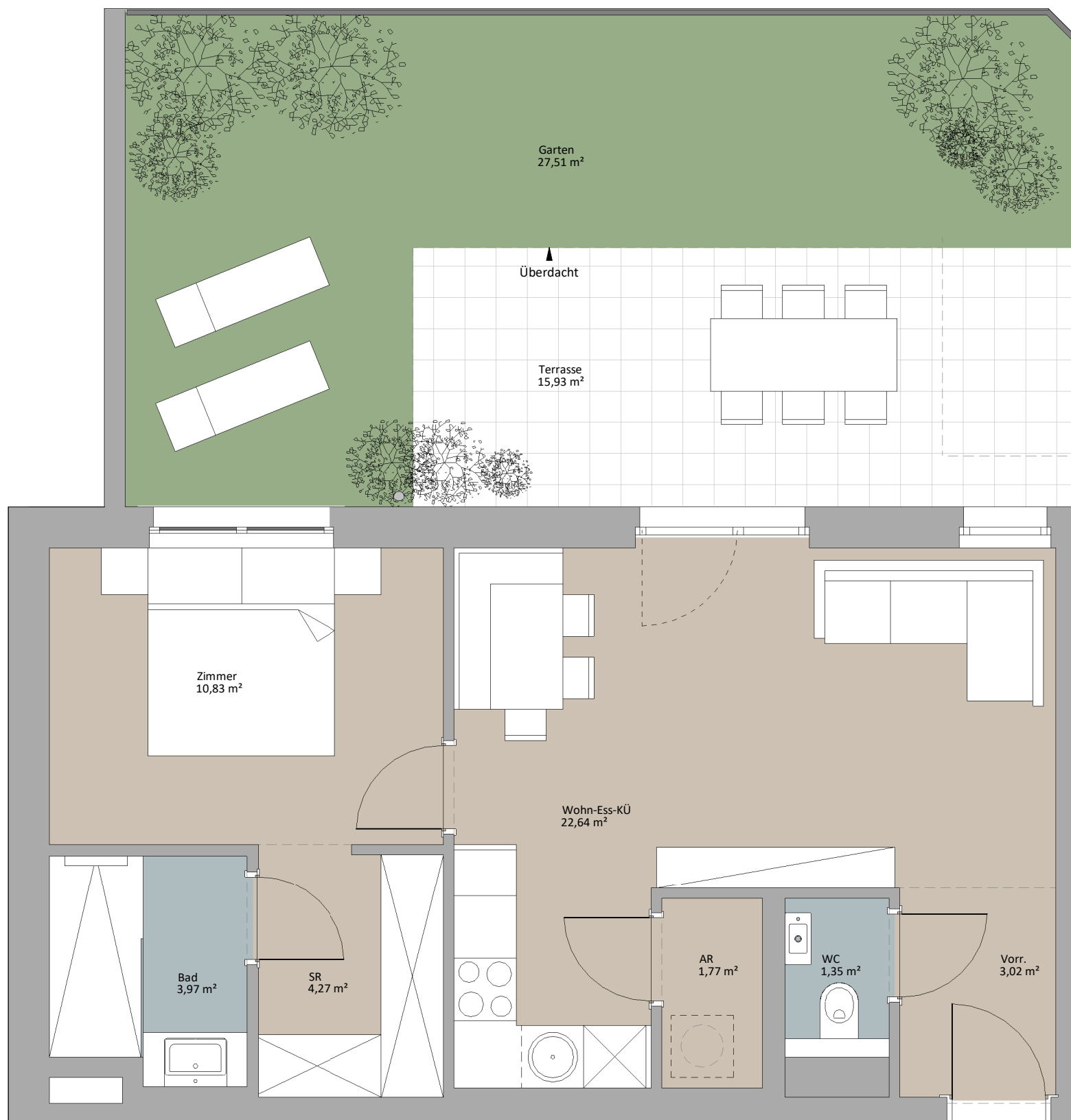


LAGEPLAN

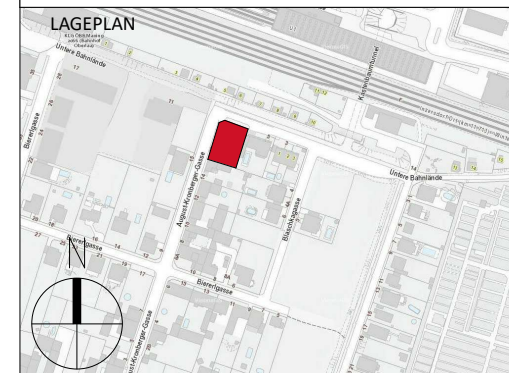


EG - TOP 05

| | |
|-------------|----------------------|
| WC | 1,35 m ² |
| Zimmer | 10,83 m ² |
| Wohn-Ess-KÜ | 22,64 m ² |
| Bad | 3,97 m ² |
| AR | 1,77 m ² |
| Vorr. | 3,02 m ² |
| SR | 4,27 m ² |
| | 47,86 m ² |
| Garten | 27,51 m ² |
| Terrasse | 15,93 m ² |
| | 43,44 m ² |



TOP 5



RUSTLER²
REAL ESTATE EXPERTS

PLANVERFASSER
Rustler Baumanagement GmbH

MAKLER
Rustler Immobilienreuehand GmbH
Mariahilfer Straße 196, 1150 Wien
Tel.: +43 (1) 894 97 46
E.: office@makler.rustler.eu

