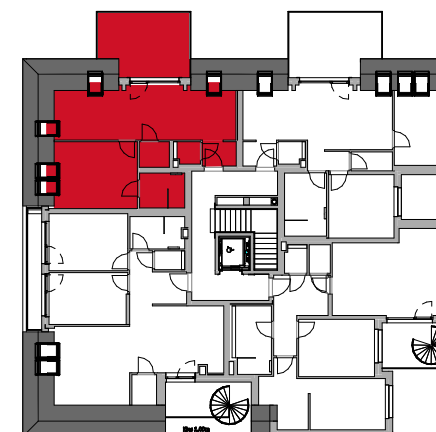


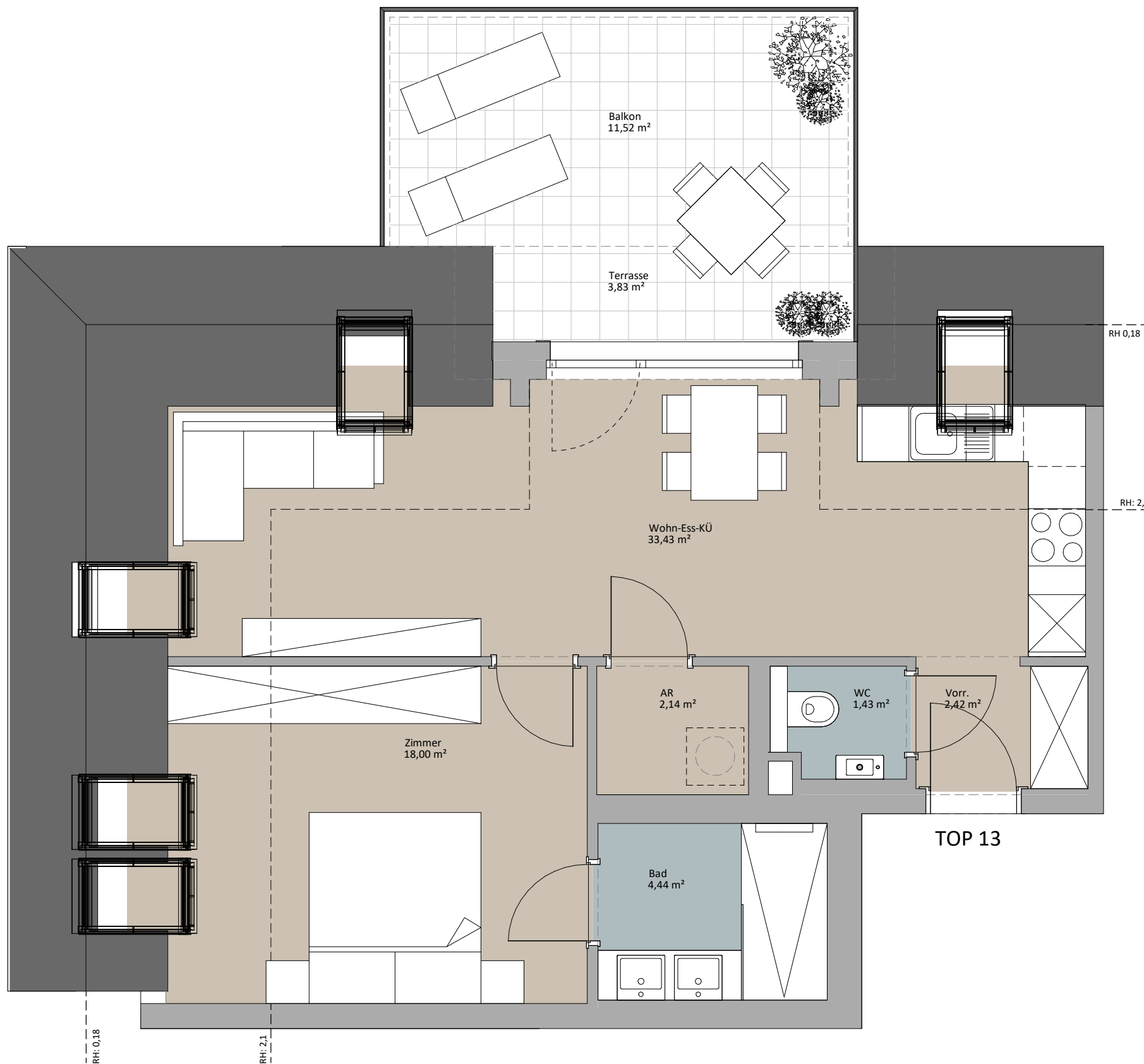


LAGEPLAN

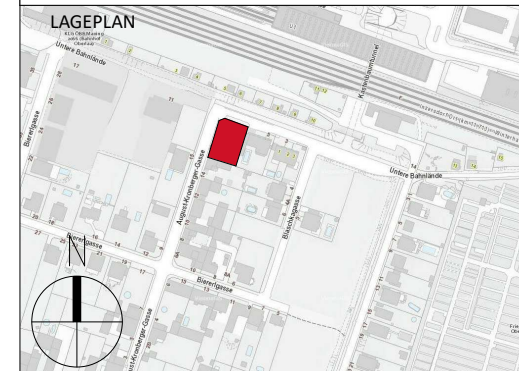


TOP 13

Bad	4,44 m <sup>2</sup>
Zimmer	18,00 m <sup>2</sup>
WC	1,43 m <sup>2</sup>
AR	2,14 m <sup>2</sup>
Vorr.	2,42 m <sup>2</sup>
Wohn-Ess-KÜ	33,43 m <sup>2</sup>
	61,85 m <sup>2</sup>
Balkon	11,52 m <sup>2</sup>
Terrasse	3,83 m <sup>2</sup>
	15,35 m <sup>2</sup>



TOP 13



**RUSTLER<sup>2</sup>**  
REAL ESTATE EXPERTS

PLANVERFASSER  
Rustler Baumanagement GmbH

MAKLER  
Rustler Immobilienreuehand GmbH  
Mariahilfer Straße 196, 1150 Wien  
Tel.: +43 (1) 894 97 46  
E.: office@makler.rustler.eu

