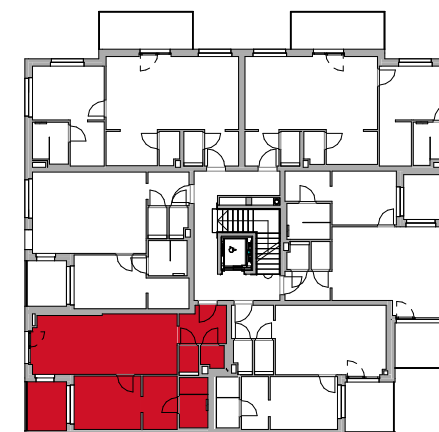




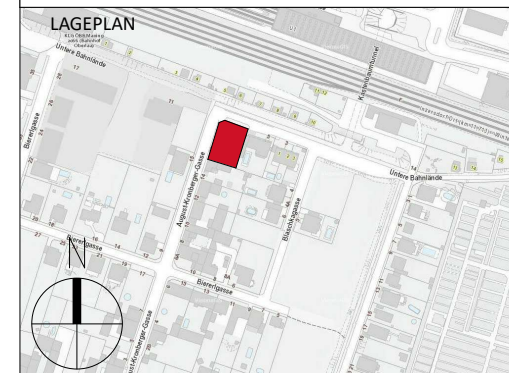
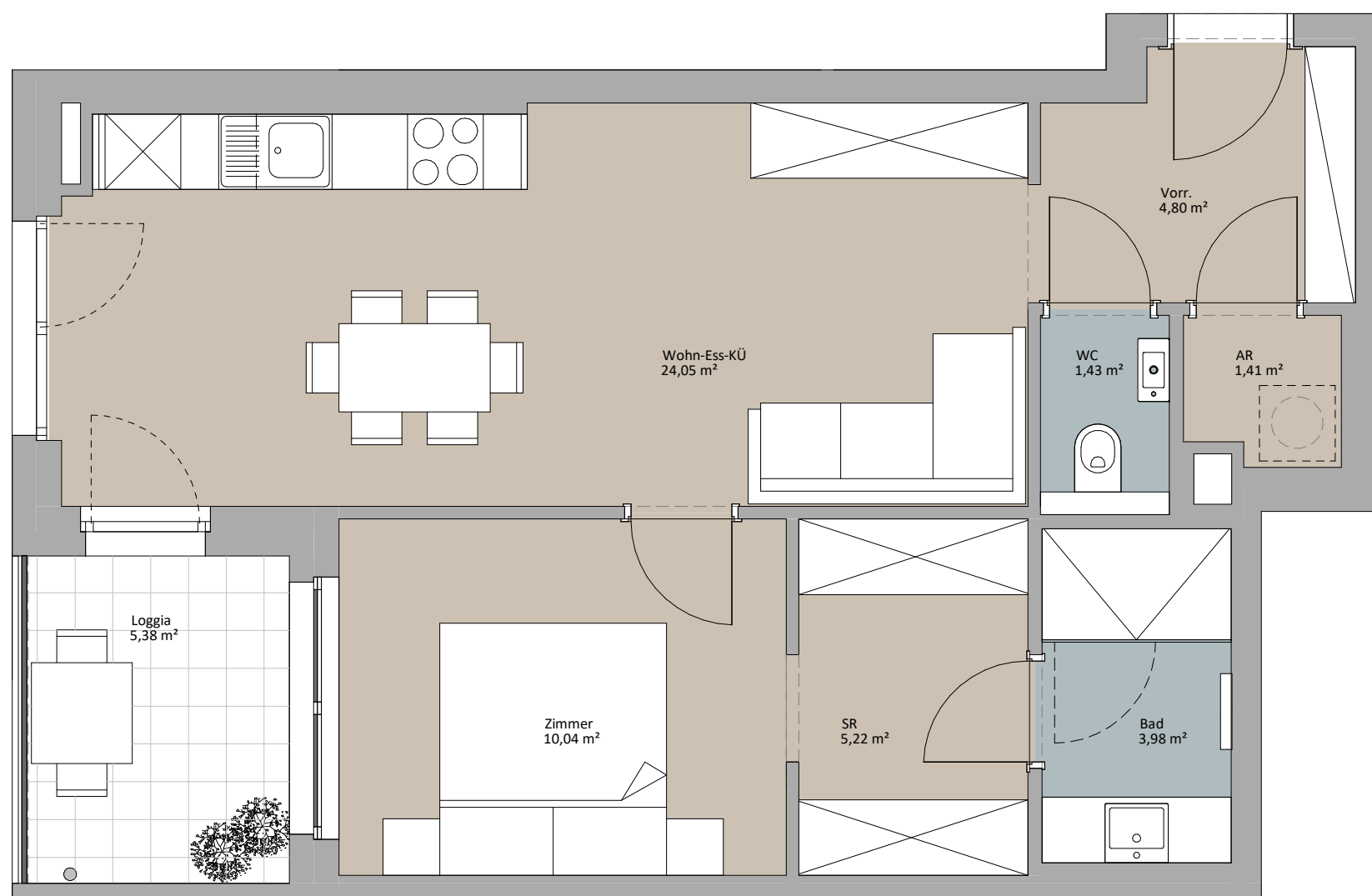
LAGEPLAN



TOP 12

Zimmer	10,04 m ²
AR	1,41 m ²
Vorr.	4,80 m ²
Wohn-Ess-KÜ	24,05 m ²
WC	1,43 m ²
SR	5,22 m ²
Bad	3,98 m ²
	50,93 m ²
Loggia	5,38 m ²
	5,38 m ²

TOP 12



RUSTLER²
REAL ESTATE EXPERTS

PLANVERFASSER
Rustler Baumanagement GmbH

MAKLER
Rustler Immobilienreuehand GmbH
Mariahilfer Straße 196, 1150 Wien
Tel.: +43 (1) 894 97 46
E.: office@makler.rustler.eu

