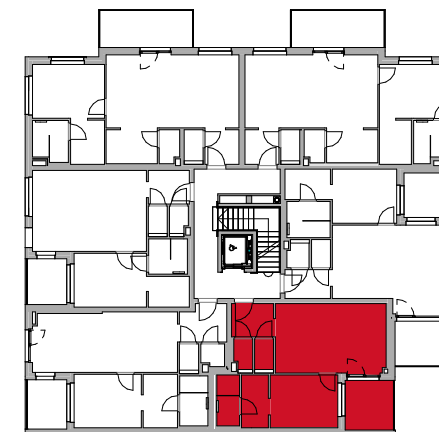


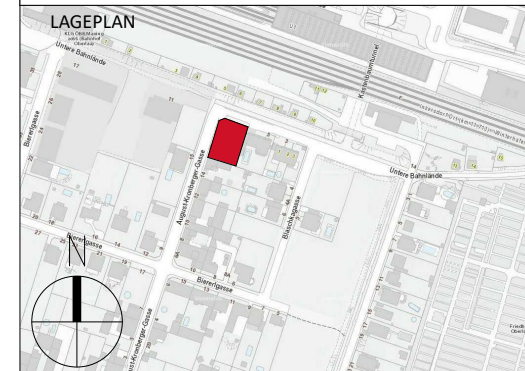
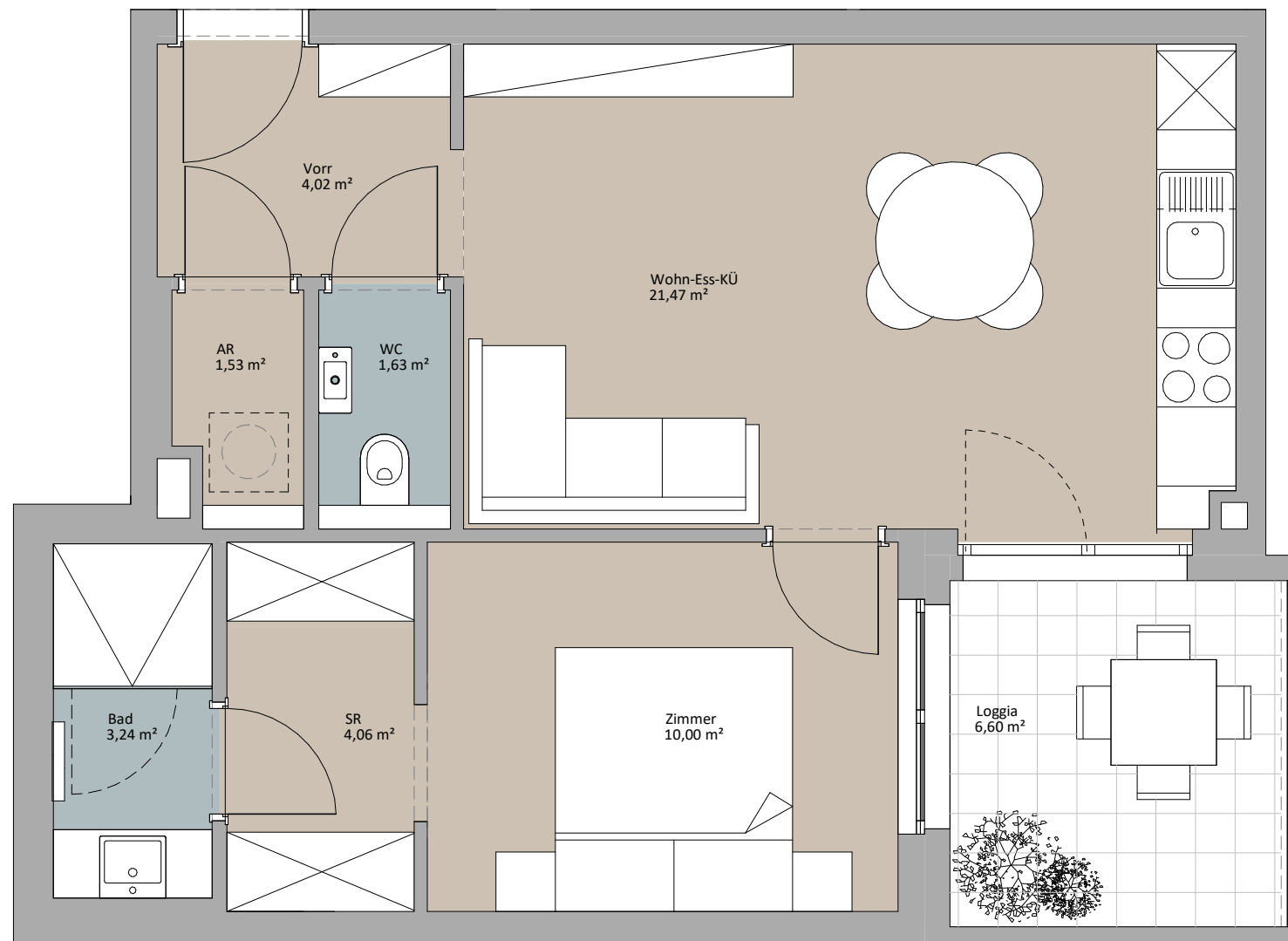


LAGEPLAN



TOP 11

Wohn-Ess-KÜ	21,47 m ²
Zimmer	10,00 m ²
Bad	3,24 m ²
Vorr	4,02 m ²
WC	1,63 m ²
AR	1,53 m ²
SR	4,06 m ²
	45,95 m ²
Loggia	6,60 m ²
	6,60 m ²



RUSTLER²
REAL ESTATE EXPERTS

PLANVERFASSER

Rustler Baumanagement GmbH

MAKLER

Rustler Immobilienreuehand GmbH

Mariahilfer Straße 196, 1150 Wien

Tel.: +43 (1) 894 97 46

E.: office@makler.rustler.eu

STAND: JULI 2020

BEARBEITER: JAH