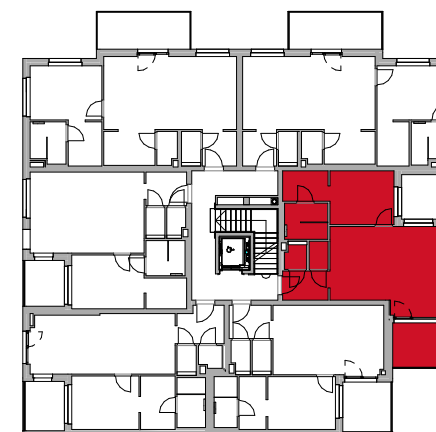


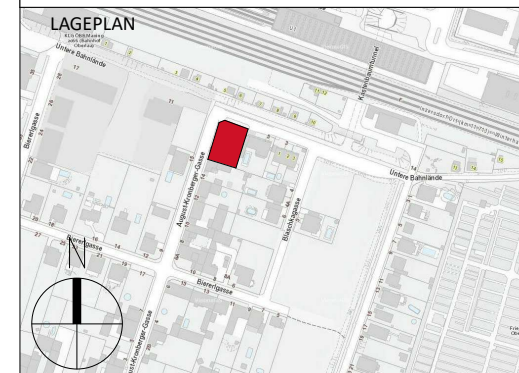
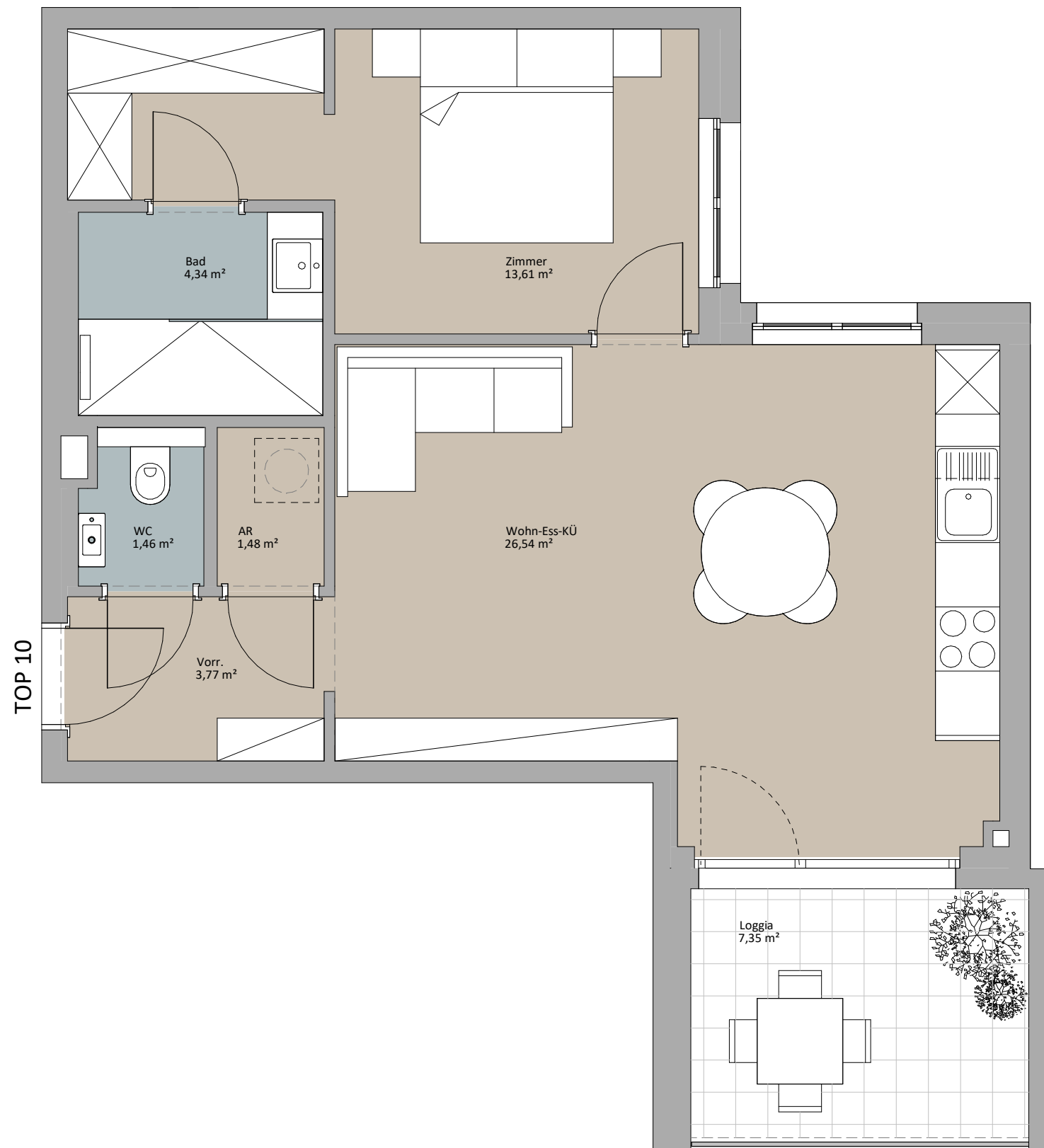


LAGEPLAN



TOP 10

Wohn-Ess-KÜ	26,54 m ²
Vorr.	3,77 m ²
Bad	4,34 m ²
Zimmer	13,61 m ²
WC	1,46 m ²
AR	1,48 m ²
	51,20 m ²
Loggia	7,35 m ²
	7,35 m ²



RUSTLER²
REAL ESTATE EXPERTS

PLANVERFASSER
Rustler Baumanagement GmbH

MAKLER
Rustler Immobilienreuehand GmbH
Mariahilfer Straße 196, 1150 Wien
Tel.: +43 (1) 894 97 46
E.: office@makler.rustler.eu

STAND: JULI 2020

BEARBEITER: JAH

