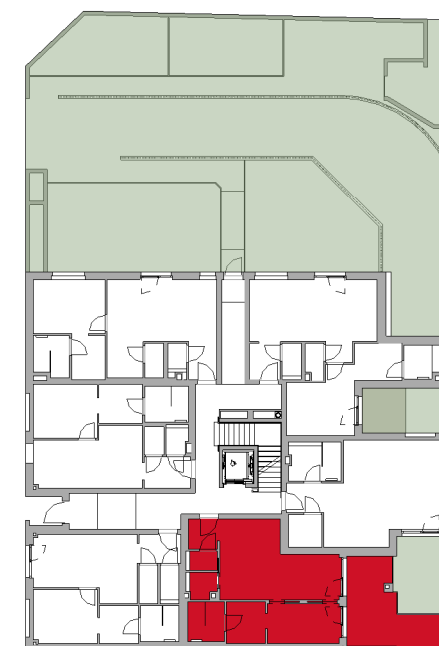
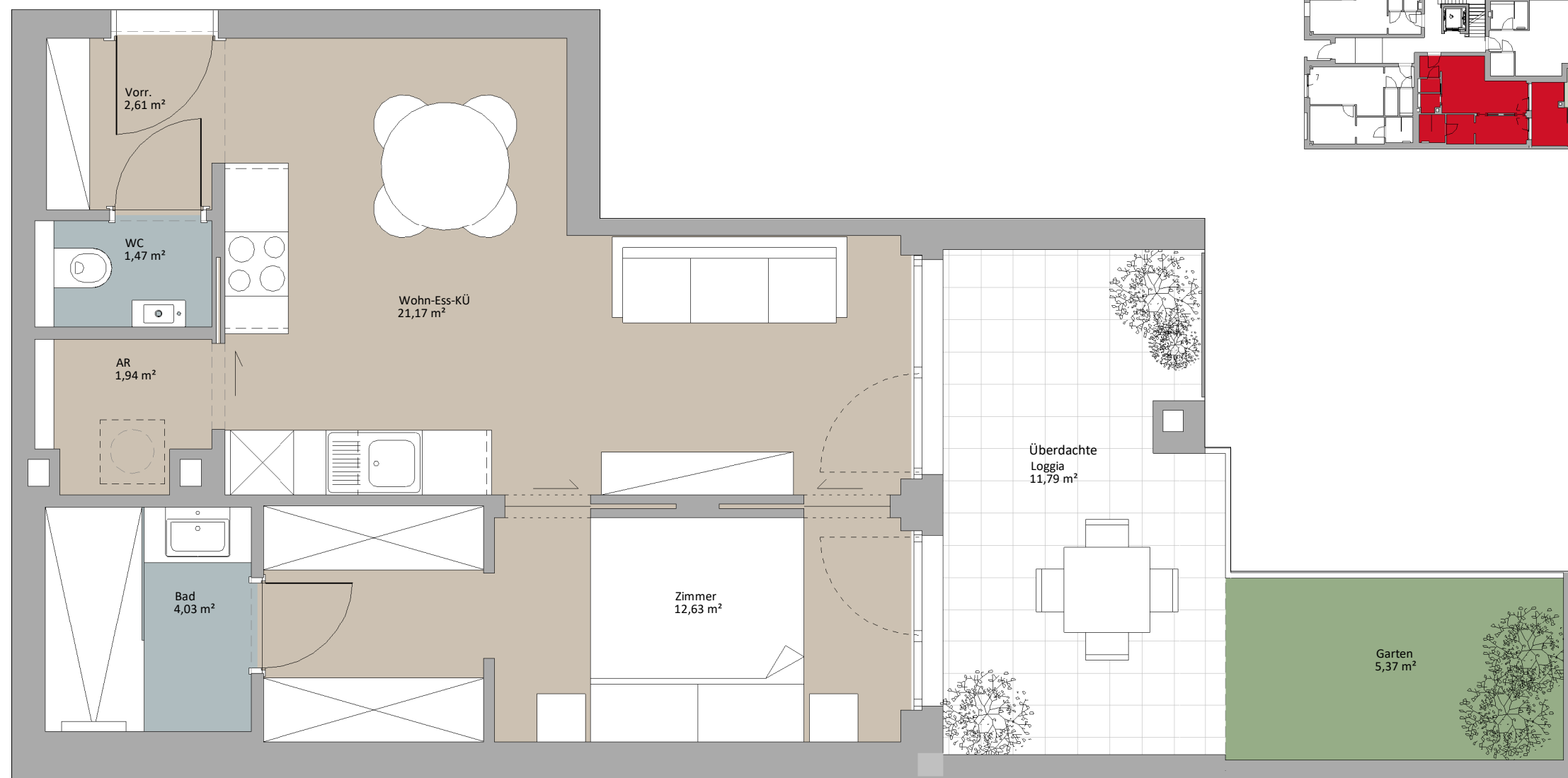




LAGEPLAN

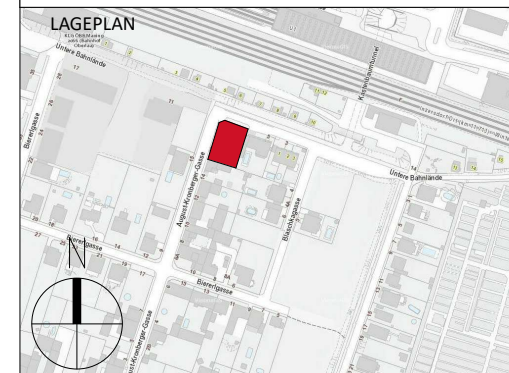


TOP 2



EG - TOP 02

Bad	4,03 m <sup>2</sup>
Wohn-Ess-KÜ	21,17 m <sup>2</sup>
Zimmer	12,63 m <sup>2</sup>
AR	1,94 m <sup>2</sup>
WC	1,47 m <sup>2</sup>
Vorr.	2,61 m <sup>2</sup>
	43,85 m <sup>2</sup>
Loggia	11,79 m <sup>2</sup>
Garten	5,37 m <sup>2</sup>
	17,16 m <sup>2</sup>



**RUSTLER<sup>2</sup>**  
REAL ESTATE EXPERTS

PLANVERFASSER  
Rustler Baumanagement GmbH

MAKLER  
Rustler Immobilienreuehand GmbH  
Mariahilfer Straße 196, 1150 Wien  
Tel.: +43 (1) 894 97 46  
E.: office@makler.rustler.eu

