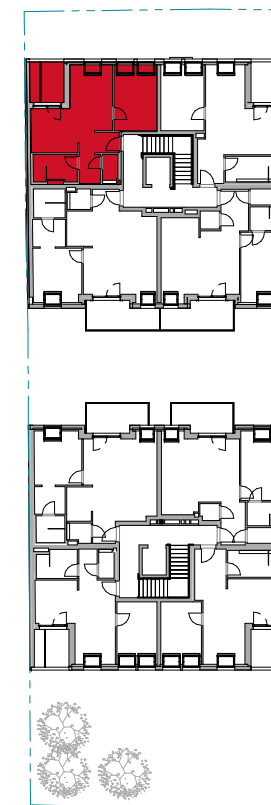
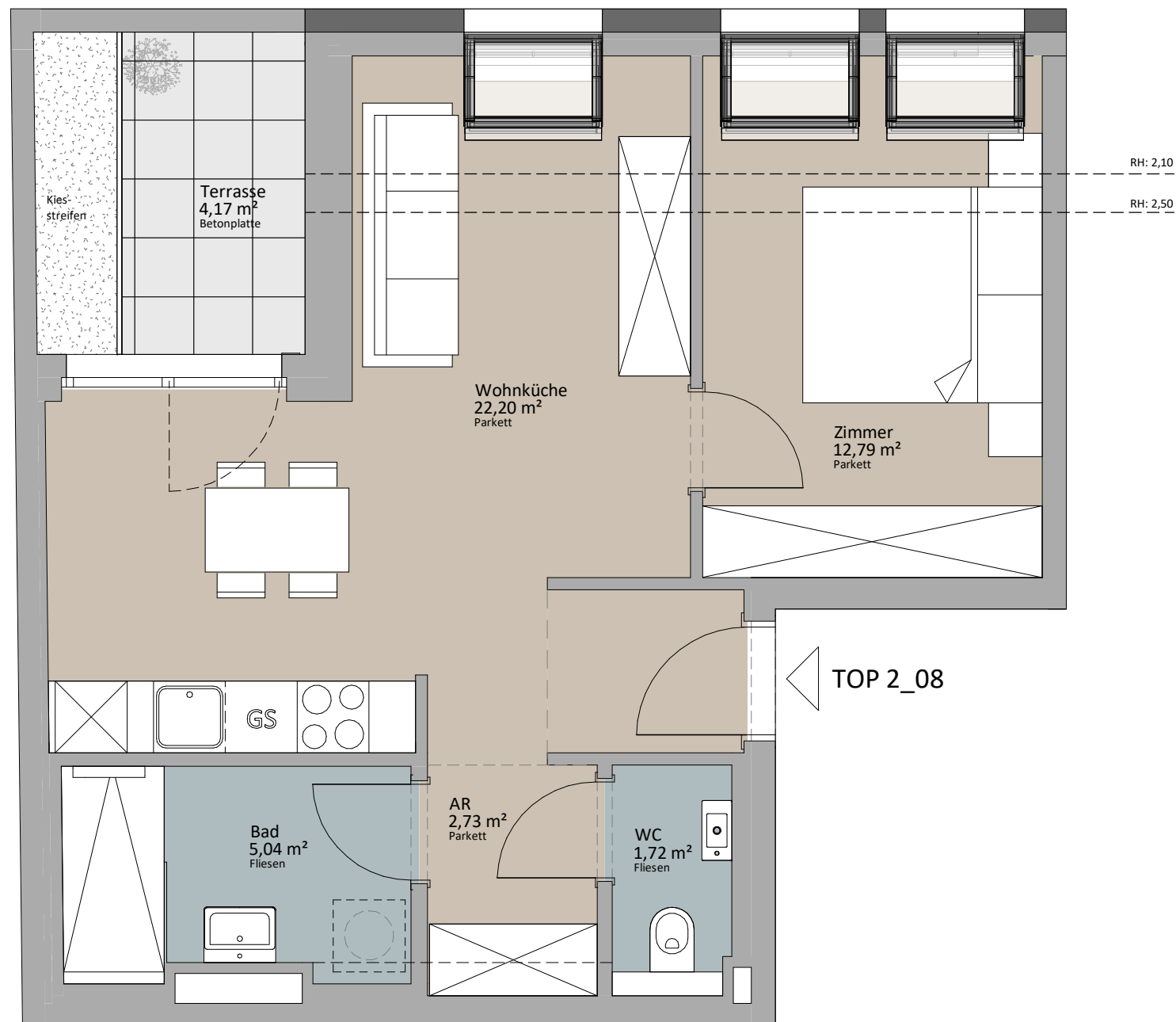


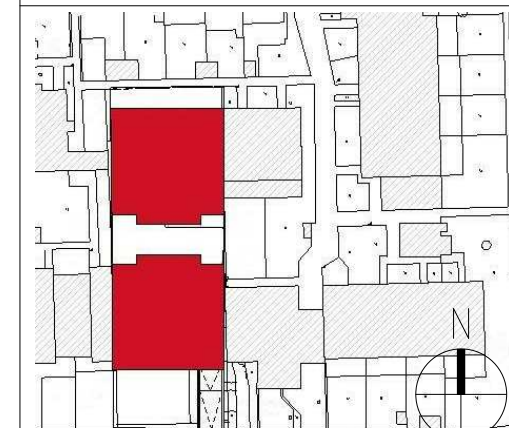


DG1 - Top 2_08

Zimmer	12,36 m ²
WC	1,72 m ²
Wohnküche	22,20 m ²
Bad	5,04 m ²
AR	2,73 m ²
VR	2,24 m ²
	46,29 m ²
Terrasse	4,17 m ²
	4,17 m ²



LAGEPLAN



RUSTLER²
REAL ESTATE EXPERTS

PLANVERFASSER

Rustler Baumanagement GmbH

MAKLER

Rustler Immobilienreuehand GmbH

Mariahilfer Straße 196, 1150 Wien

Tel.: +43 (1) 894 97 46

E.: office@makler.rustler.eu

STAND: OKTOBER 2020

BEARBEITER: MSÖ

