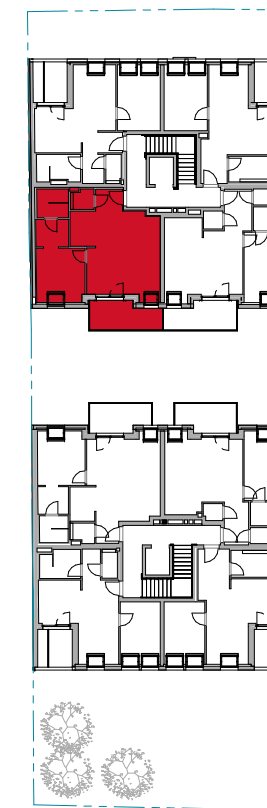


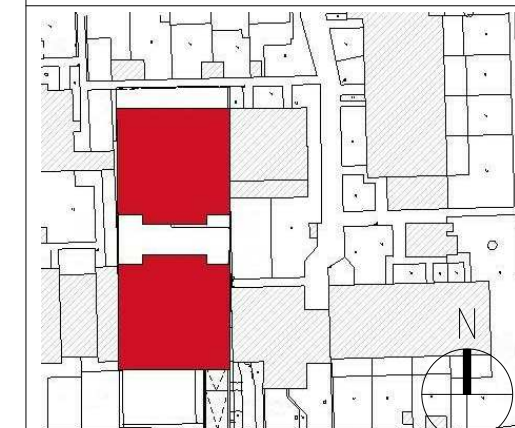


DG1 - Top 2\_07

|           |                      |
|-----------|----------------------|
| WC        | 1,74 m <sup>2</sup>  |
| Zimmer    | 11,47 m <sup>2</sup> |
| Wohnküche | 29,74 m <sup>2</sup> |
| Bad       | 3,95 m <sup>2</sup>  |
| VR        | 2,58 m <sup>2</sup>  |
| SR        | 4,02 m <sup>2</sup>  |
|           | 53,51 m <sup>2</sup> |
| Balkon    | 8,51 m <sup>2</sup>  |
|           | 8,51 m <sup>2</sup>  |



LAGEPLAN



**RUSTLER<sup>2</sup>**  
REAL ESTATE EXPERTS

PLANVERFASSER

Rustler Baumanagement GmbH

MAKLER

Rustler Immobilienreuehand GmbH

Mariahilfer Straße 196, 1150 Wien

Tel.: +43 (1) 894 97 46

E.: office@makler.rustler.eu

STAND: OKTOBER 2020

BEARBEITER: MSÖ

