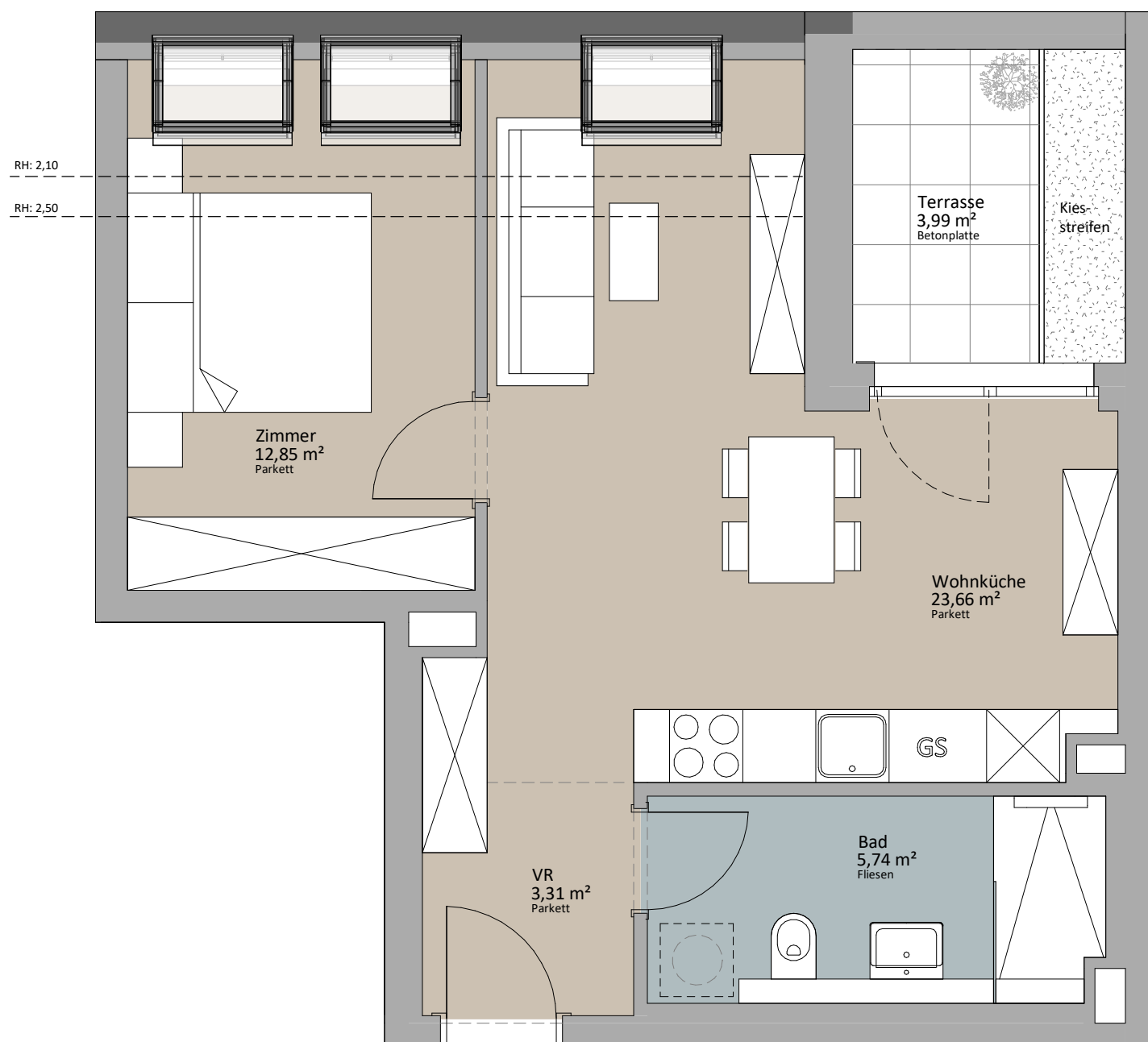
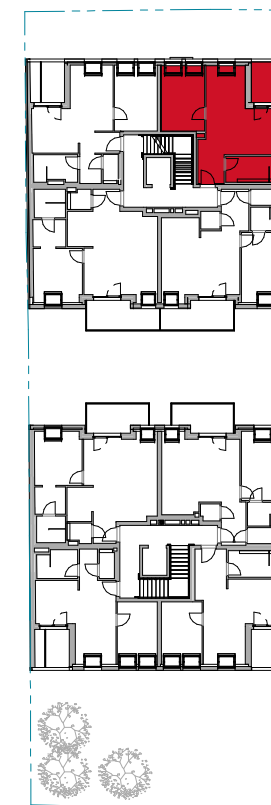




DG1 - Top 2_05

| | |
|-----------|----------------------|
| Zimmer | 12,85 m ² |
| Wohnküche | 23,66 m ² |
| Bad | 5,74 m ² |
| VR | 3,31 m ² |
| | 45,57 m ² |
| Terrasse | 3,99 m ² |
| | 3,99 m ² |



TOP 2_05

LAGEPLAN



RUSTLER²
REAL ESTATE EXPERTS

PLANVERFASSER

Rustler Baumanagement GmbH

MAKLER

Rustler Immobilienreuehand GmbH

Mariahilfer Straße 196, 1150 Wien

Tel.: +43 (1) 894 97 46

E.: office@makler.rustler.eu

STAND: OKTOBER 2020

BEARBEITER: MSÖ

1:50

