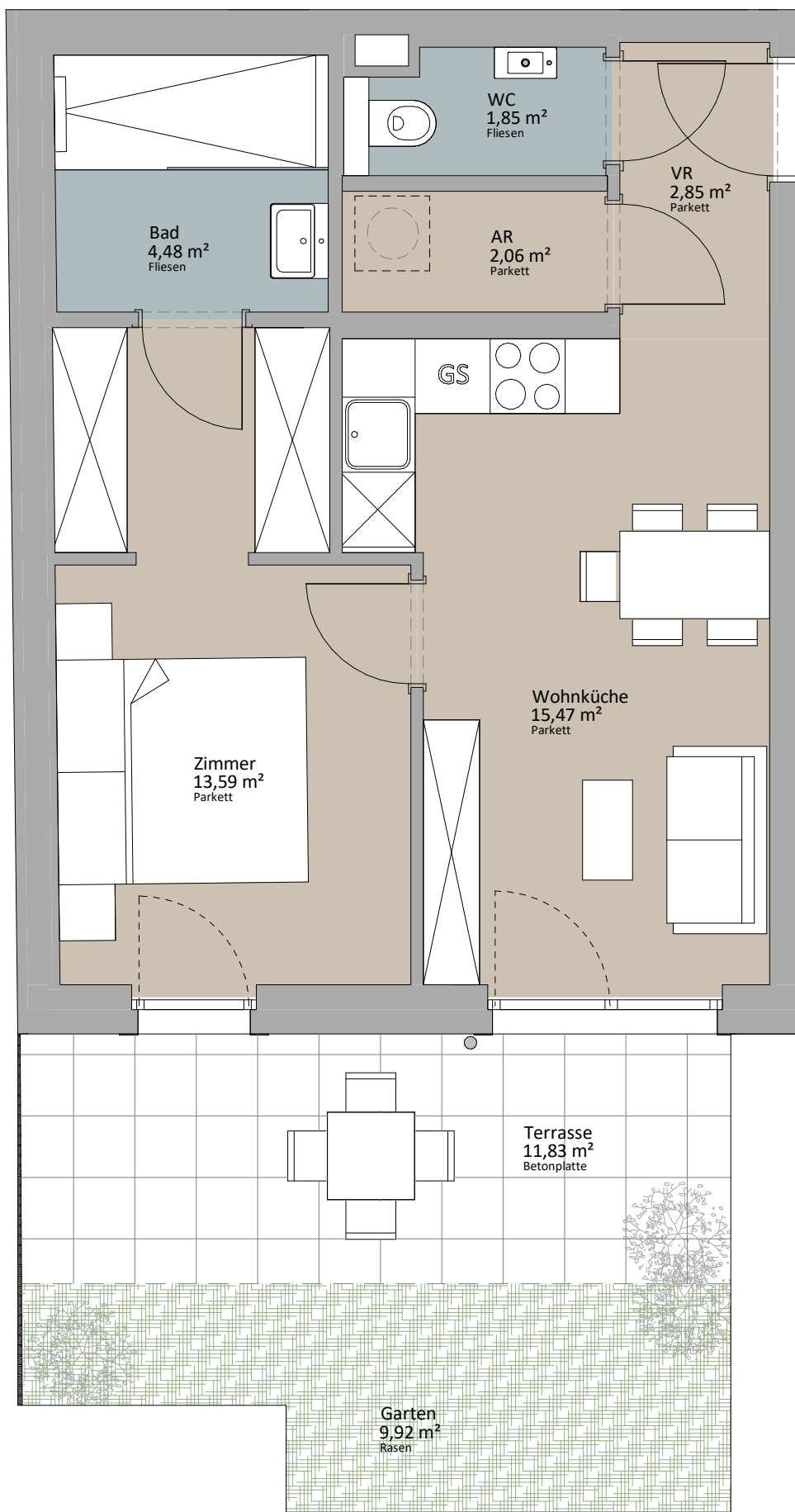


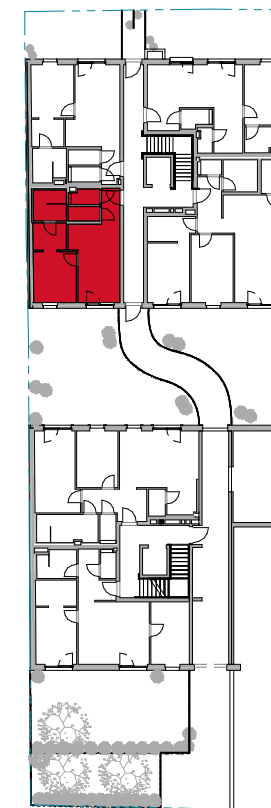


EG - Top 2\_02

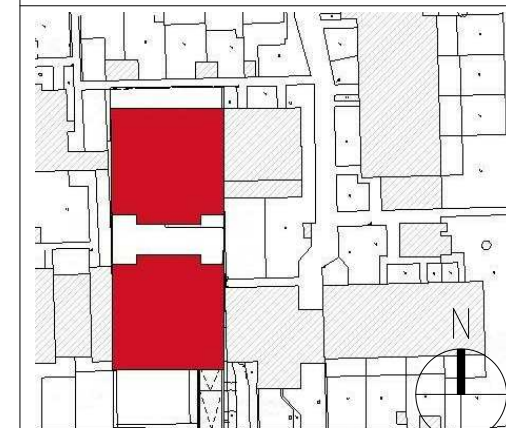
Wohnküche	15,47 m <sup>2</sup>
Zimmer	13,59 m <sup>2</sup>
AR	2,06 m <sup>2</sup>
WC	1,85 m <sup>2</sup>
Bad	4,48 m <sup>2</sup>
VR	2,85 m <sup>2</sup>
	40,29 m <sup>2</sup>
Terrasse	11,83 m <sup>2</sup>
	11,83 m <sup>2</sup>
Garten	9,92 m <sup>2</sup>
	9,92 m <sup>2</sup>



TOP 2\_02



LAGEPLAN



**RUSTLER<sup>2</sup>**  
REAL ESTATE EXPERTS

PLANVERFASSER  
Rustler Baumanagement GmbH

MAKLER  
Rustler Immobilienreuehand GmbH  
Mariahilfer Straße 196, 1150 Wien  
Tel.: +43 (1) 894 97 46  
E.: office@makler.rustler.eu

STAND: OKTOBER 2020

BEARBEITER: MSÖ

