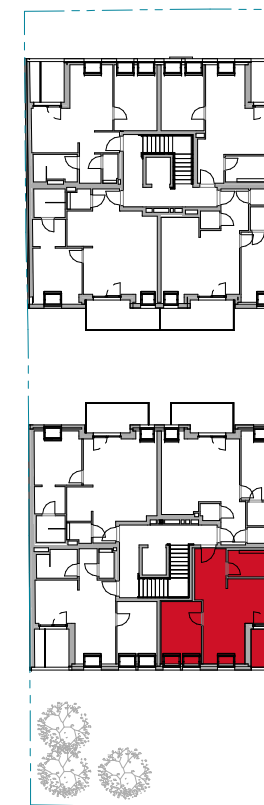


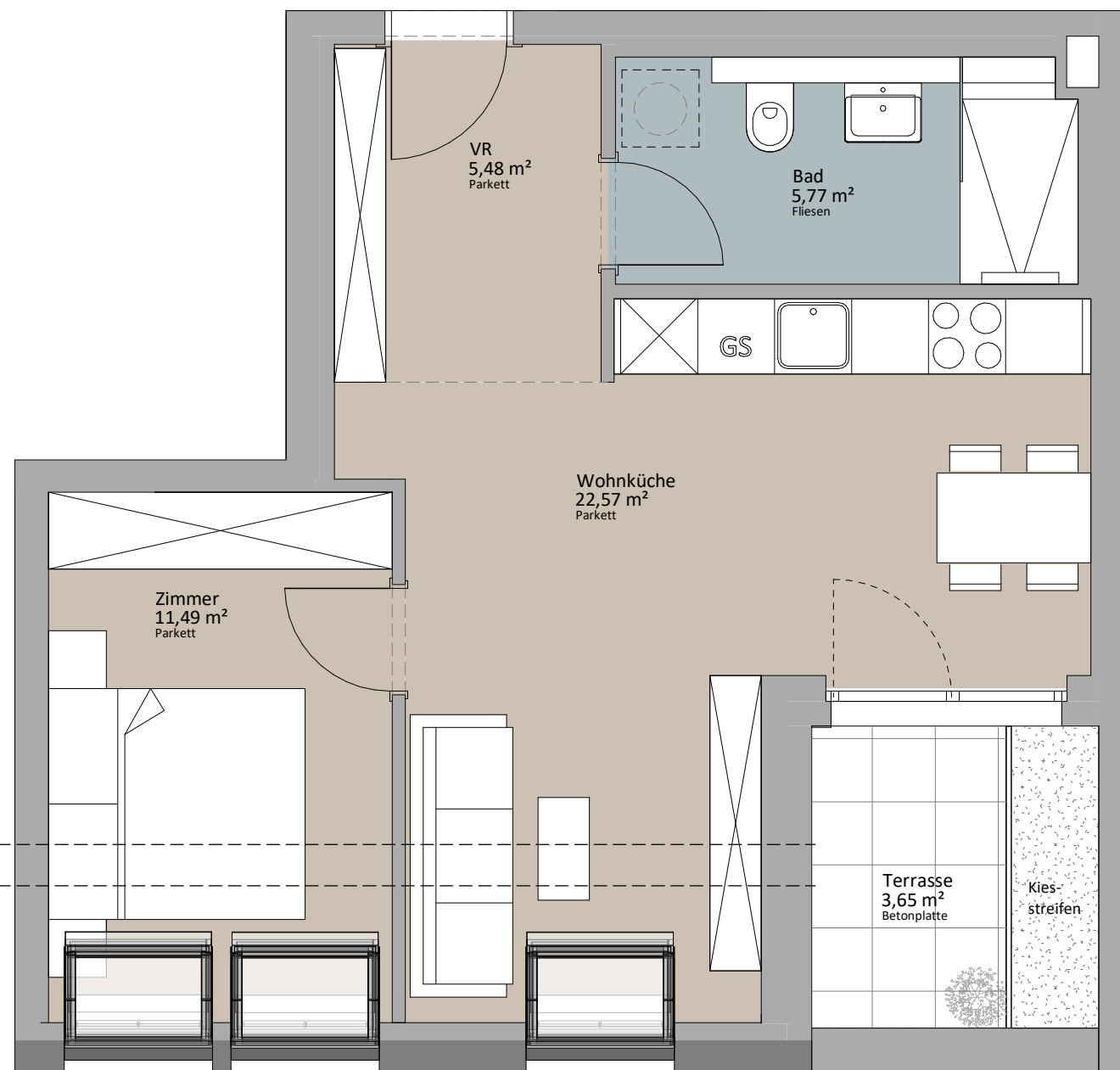


DG1 - Top 1\_04

Wohnküche	22,57 m <sup>2</sup>
Zimmer	11,49 m <sup>2</sup>
VR	5,48 m <sup>2</sup>
Bad	5,77 m <sup>2</sup>
	45,31 m <sup>2</sup>
Terrasse	3,65 m <sup>2</sup>
	3,65 m <sup>2</sup>



TOP 1\_04



RH: 2,50

RH: 2,10

LAGEPLAN



**RUSTLER<sup>2</sup>**  
REAL ESTATE EXPERTS

PLANVERFASSER  
Rustler Baumanagement GmbH

MAKLER  
Rustler Immobilienreuehand GmbH  
Mariahilfer Straße 196, 1150 Wien  
Tel.: +43 (1) 894 97 46  
E.: office@makler.rustler.eu

STAND: OKTOBER 2020

BEARBEITER: MSÖ

1:50

