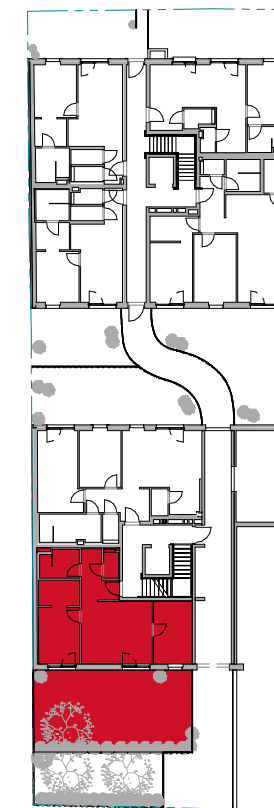
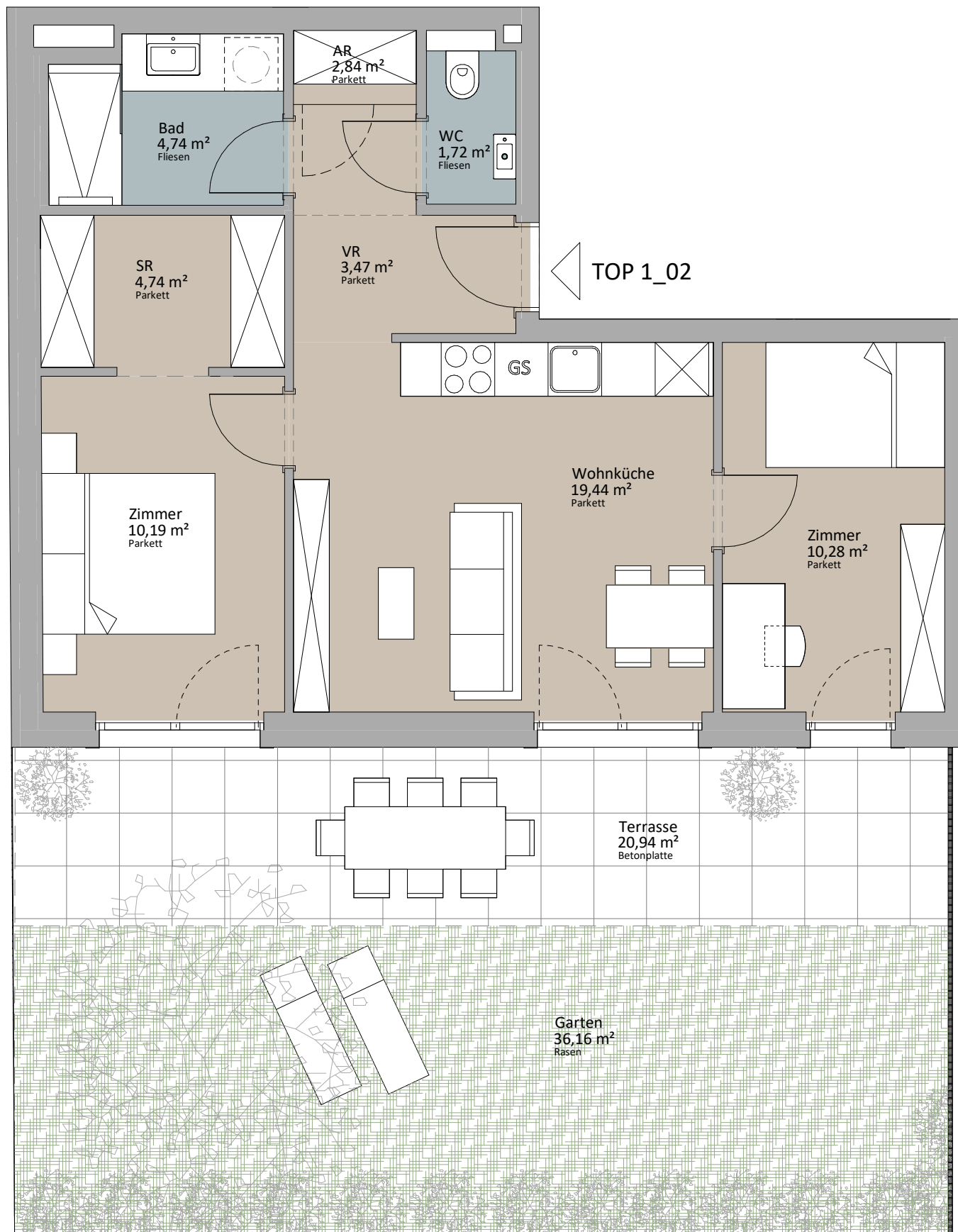


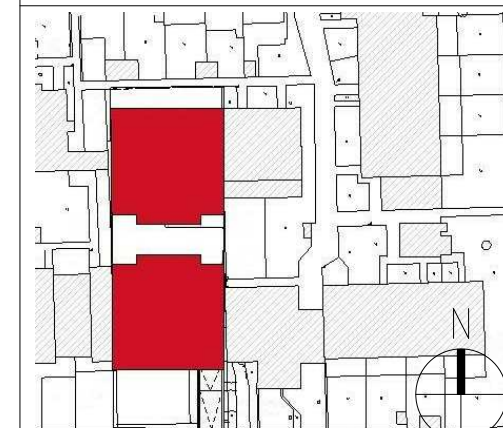


EG - Top 1\_02

Wohnküche	19,44 m <sup>2</sup>
Zimmer	10,19 m <sup>2</sup>
Bad	4,74 m <sup>2</sup>
AR	2,84 m <sup>2</sup>
WC	1,72 m <sup>2</sup>
VR	3,47 m <sup>2</sup>
Zimmer	10,28 m <sup>2</sup>
SR	4,74 m <sup>2</sup>
	57,42 m <sup>2</sup>
Terrasse	20,94 m <sup>2</sup>
	20,94 m <sup>2</sup>
Garten	36,16 m <sup>2</sup>
	36,16 m <sup>2</sup>



LAGEPLAN



**RUSTLER<sup>2</sup>**  
REAL ESTATE EXPERTS

PLANVERFASSER

Rustler Baumanagement GmbH

MAKLER

Rustler Immobilienreuehand GmbH

Mariahilfer Straße 196, 1150 Wien

Tel.: +43 (1) 894 97 46

E.: office@makler.rustler.eu

STAND: OKTOBER 2020

BEARBEITER: MSÖ

