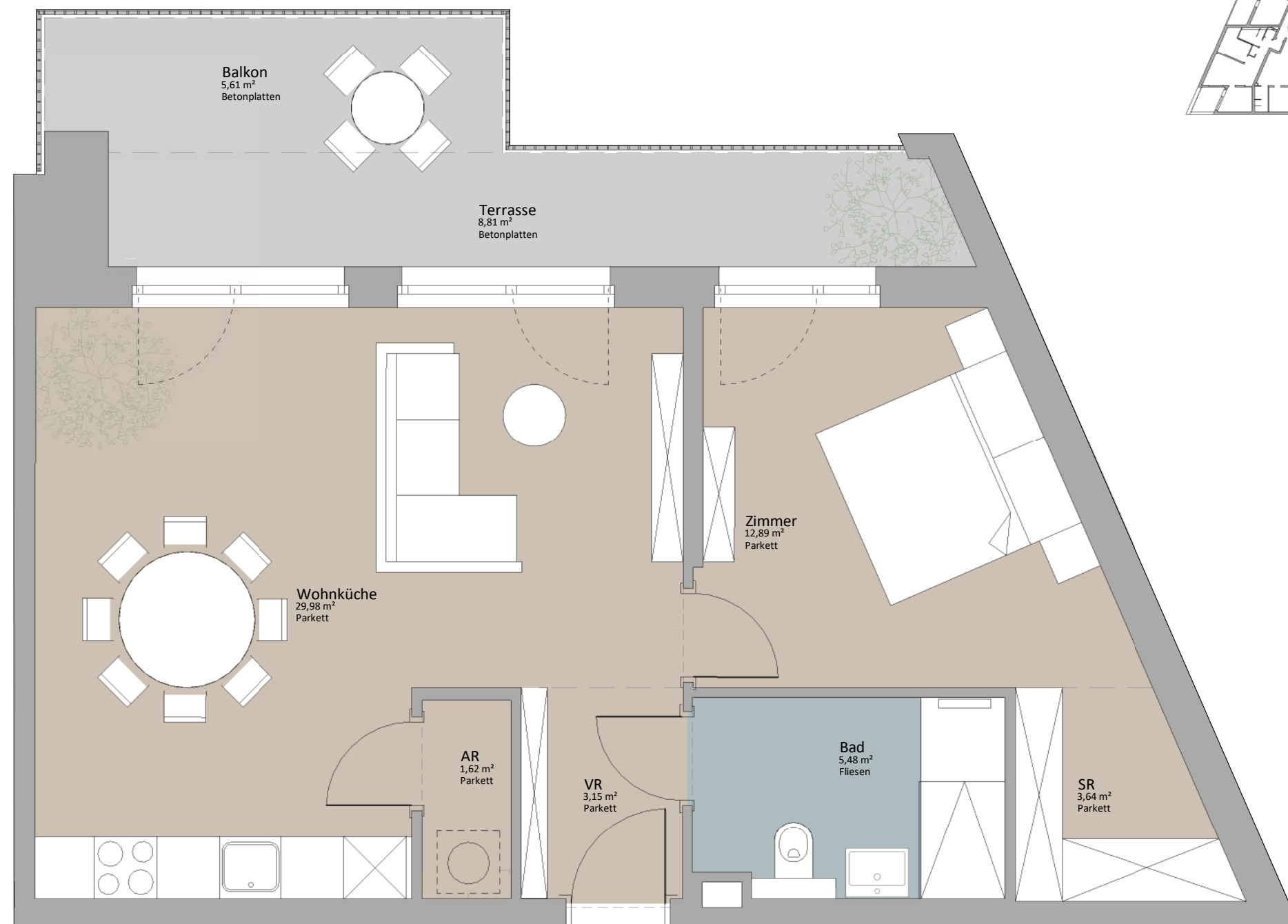




1.DG STGH 2\_TOP 10

Wohnküche	29,98 m <sup>2</sup>
Zimmer	12,89 m <sup>2</sup>
Bad	5,48 m <sup>2</sup>
AR	1,62 m <sup>2</sup>
VR	3,15 m <sup>2</sup>
SR	3,64 m <sup>2</sup>
	56,76 m <sup>2</sup>
Balkon	5,61 m <sup>2</sup>
Terrasse	8,81 m <sup>2</sup>
	14,42 m <sup>2</sup>

ER Top2_10	2,60 m <sup>2</sup>
------------	---------------------



TOP 2\_10



LAGEPLAN



**RUSTLER<sup>2</sup>**  
REAL ESTATE EXPERTS

PLANVERFASSER  
Rustler Baumanagement GmbH

MAKLER  
Rustler Immobilienreuehand GmbH  
Mariahilfer Straße 196, 1150 Wien  
Tel.: +43 (1) 894 97 46  
E.: office@makler.rustler.eu