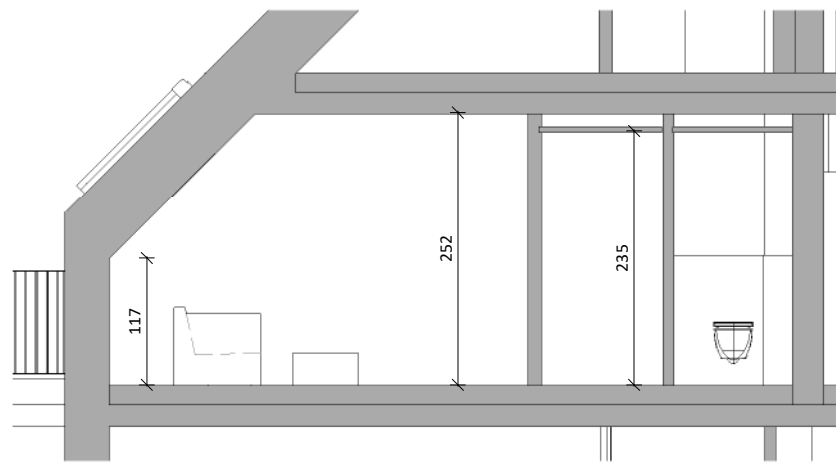




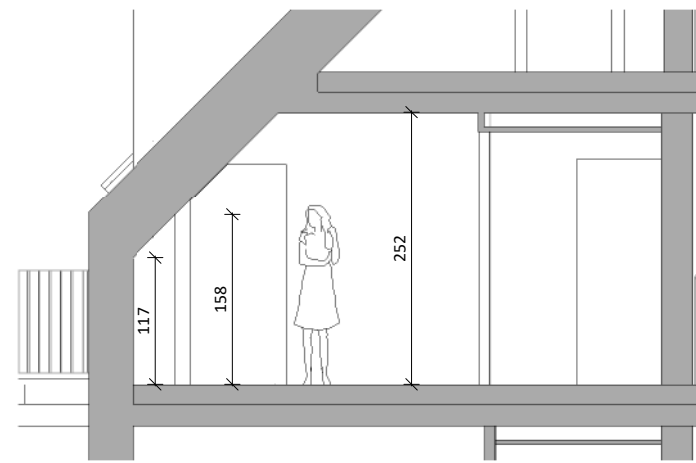
1.DG STGH 2_TOP 06

| | |
|-----------|----------------------|
| Zimmer | 14,25 m ² |
| Wohnküche | 28,53 m ² |
| WC | 1,82 m ² |
| VR | 2,94 m ² |
| AR | 2,11 m ² |
| Bad | 4,49 m ² |
| SR | 3,24 m ² |
| | 57,38 m ² |
| Balkon | 13,42 m ² |
| | 13,42 m ² |

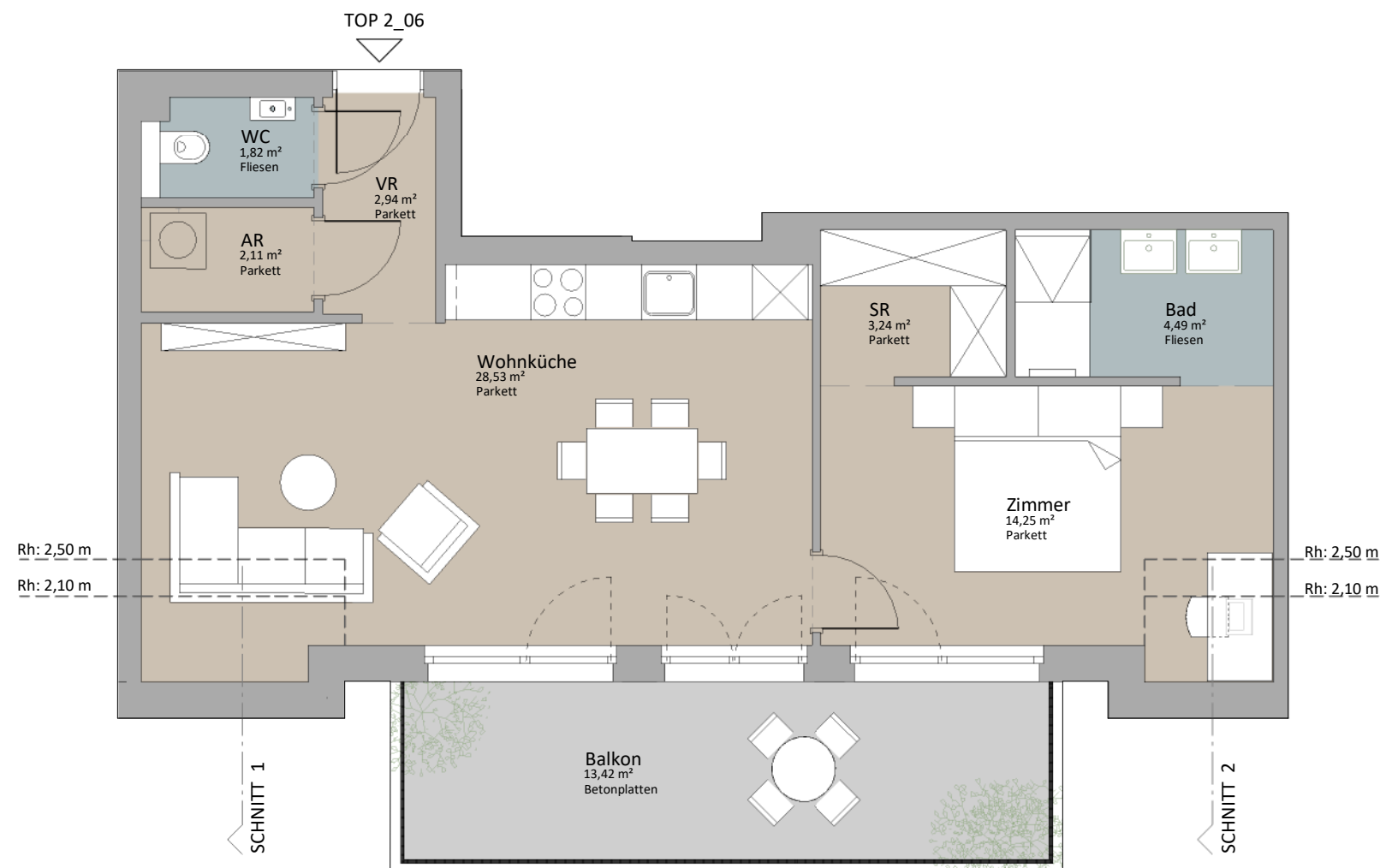
| | |
|-----------|---------------------|
| ER Top2_6 | 2,16 m ² |
|-----------|---------------------|



SCHNITT 1



SCHNITT 2



LAGEPLAN



RUSTLER²
REAL ESTATE EXPERTS

PLANVERFASSER

Rustler Baumanagement GmbH

MAKLER

Rustler Immobilienreuehand GmbH

Mariahilfer Straße 196, 1150 Wien

Tel.: +43 (1) 894 97 46

E.: office@makler.rustler.eu

STAND: 11.2022

BEARBEITER: PV